

e-Freight

The Web centric anytime anywhere multi-modal ERP Solution for Freight Forwarders

e-Freight - Freight Forwarding System - Mozilla Firefox

File Edit View History Bookmarks Tools Help

Welcome to
e-Freight
Select a Location
DTL Go
e-Freight login
[Shipper/Consignee Login](#)

Find: mahindra Next Previous Highlight all Match case

Done

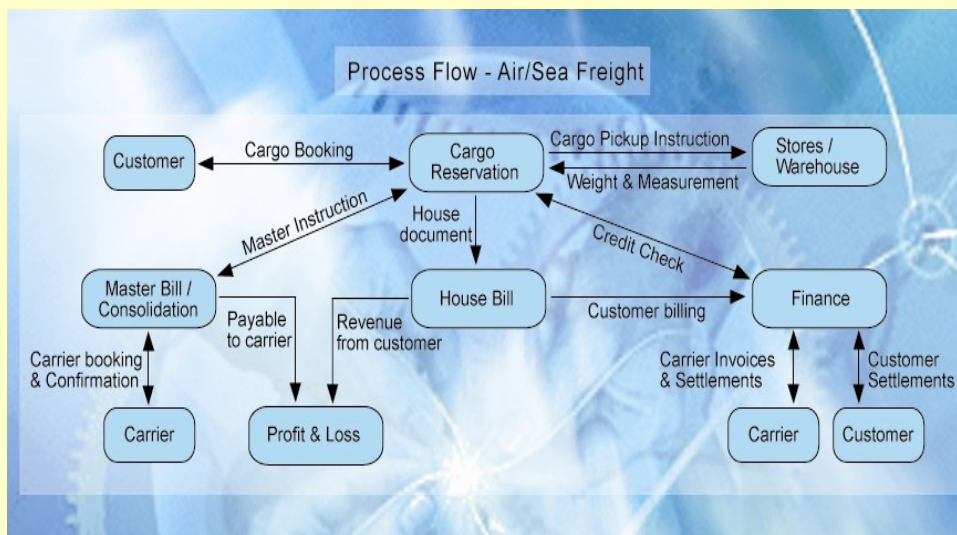
e-Freight – The ERP Solution for Freight Forwarding Industry

As a Freight Forwarder, you would require to

- Handle more shipments with less overhead/cost
- Monitor cost per shipment
- Track progress of the jobs in hand
- Provide data sharing and collaboration with regional offices
- Provide shipment status to shipper/consignee
- Have visibility of multi branch/location operations
- All the above require you to access your business data from any part of the world at anytime of the day

With web centric e-Freight software, it is possible to accomplish all the above and more:-

e-Freight includes modules and functionality to cover all complex operations within the Freight Forwarding industry covering Air Freight Export and Import, Sea Freight Export and Import, Sales, Stores, Finance and HR functions.



e-Freight is a Web centric application which allows you to work from multiple locations and carry out your business operations in real time with great efficiency from any part of the world with just an internet connection (**a DSL connection or even a wireless connection from your laptop !**). The possibilities are unlimited.

Multiple options to choose from:-

e-Freight is a Web centric application and the architecture is state-of-art. This gives us the flexibility to offer multiple choices to you to use e-Freight in a cost effective way for your Freight Forwarding business needs.

Option 1 – Hosted model. You may rent the software from us and use it by paying a monthly rental. We will host it and manage it for you.

Advantages of hosted model

Lower total cost of ownership– There is no up-front investment for buying the software. You can start using the software at a very low cost whether you have just one branch operation or multi branch operations.

Minimal IT maintenance – Apart from a local network with internet access you do not require anything else to use e-Freight. **NeoSoft** will be hosting the application for you in reputed Data Centers in India or US which are available 24 x 7

Predictable IT costs - Because the user pays only for what they use, IT costs are predictable

Quick start – All you need is an internet connection to start using e-Freight.

Easy upgrade – You may upgrade from the rental scheme and buy the software from us (refer Option 2 and 3)

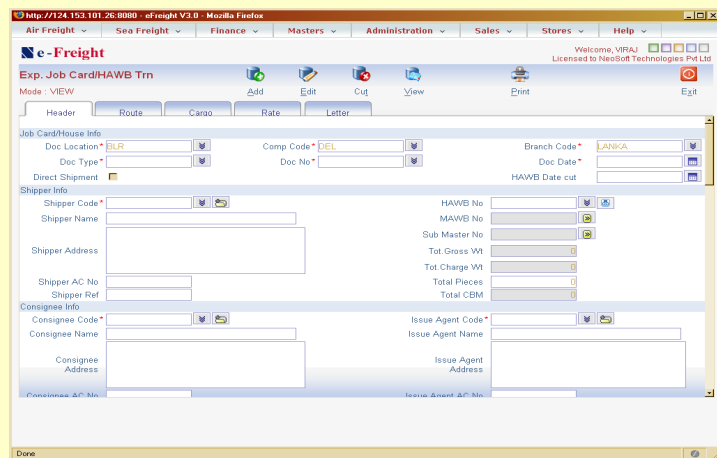
Option 2 – Buy the software from us, but we host it for you

In this option, you may buy the software from us, but we will manage it for you in our Data Center taking away your worries of management and maintenance

Option 3 – Buy the software from us and manage it yourself with your IT team.

e-Freight Modules

- Air Export and Import Operations
- Sea Export and Import Operations
- Sales
- Stores
- Finance
- HR
- Tracker



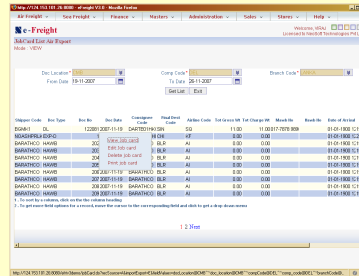
e-Freight Key Features

Operational Features

Benefit

- Software can generate all necessary documents for your day-to-day Freight Forwarding operations
- For Export:- House bills, Master bills, Shipper Invoices, Agent Invoices/Credit notes, Pre Alert, various Manifest etc.
- For Import:-Cargo Arrival Notice, Invoice to Consignee for collect shipment, Delivery Order etc

Your staff saves time, their efficiency is increased and the documents are available whenever it is required.



- Track Credit status of shipper
- Track profit/loss of every shipment or job
- Login for shipper and consignee
- Management reports such as Tonnage reports, Profitability statements, DSR, CSR etc on a daily/weekly/monthly basis
- Integrated Finance module
- Station networking

Shipment cannot be carried out if the shipper exceeds the credit limit allowed to them.

Helps the operations staff as well as management to monitor profitability of every shipment

Your customers (shipper and consignee) can login to the system to track their shipment status

Management can instantaneous view of the business generated and its profitability including yield per kg. Tonnage reports can be generated by Shipper, Consignee, Destination, Airline etc.

Helps closely monitor the finance aspect of your business.

If export and import stations are within the same group, export shipment details can be automatically imported to the import stations saving precious time for the user

General Features

Benefit

- Web Centric Architecture
- Auto Alerts by email for un-finished tasks

Anywhere anytime access giving you complete visibility of your business from any part of the world at any time

No trouble of installing software on every PC, you just need a browser such as Internet Explorer or FireFox to start using the software.

If you are not ready to host it on the internet, you may install it in within your local network. But you can extend to internet whenever you are ready.

No job left unfinished, always on top of the situation.

General Features continued.....

- Compatible with multiple browsers such as Internet Explorer and FireFox
More choice means makes it easier to access from anywhere without being bothered about the browsing software
- Web Centric, but works like a rich Desktop GUI application
Very user friendly screens, can be operated even without mouse.
- All Reports can be generated in PDF or HTML
PDF format makes it tamper proof
- MIS reports can be exported to MS Excel
Flexibility in re-formatting or re-sorting reports using MS Excel whenever required
- Auto email MIS reports. Any MIS reports (such as tonnage or DSR etc) can be automatically generated at predefined intervals and send to your email address.
Know what is going on in your business irrespective of your presence in office. You need not login into e-Freight to view the reports.
- Customizable screens
Even though the software is developed for a wide variety of users in mind, you can customize the screens to show only those fields applicable for your business environment.
- Audit trail of changes
To find out who has changed or deleted the data as well as when it was changed or deleted
- Themes
Screen colors can be selected based on individual taste

Technical Features

Benefit

- | | |
|---|---|
| <ul style="list-style-type: none"> ● Developed using J2EE | <p>Compatible with multiple Operating System such as Windows Servers or Linux/Unix Servers giving you more choice. This helps to optimize deployment issues in terms of cost and performance .</p> <p>Multiple choices off J2EE servers</p> |
| <ul style="list-style-type: none"> ● Supports Multiple Databases <ul style="list-style-type: none"> □ Oracle □ MS Sql □ Sybase □ My Sql | <p>You can choose any of these databases based on your corporate policy or cost consideration</p> |

About us : *NeoSoft* specializes in the design and development of enterprise application software solutions, mainly in the areas of Logistics and Manufacturing.

For more information about e-Freight or to arrange a demo,

Please Call us +91-80-25526347/25503227-30 or email us at info@neosoft-tec.com

NeoSoft Technologies Pvt Ltd, No 1, 5 A Block, Koramangala, Bangalore – 560034, India.